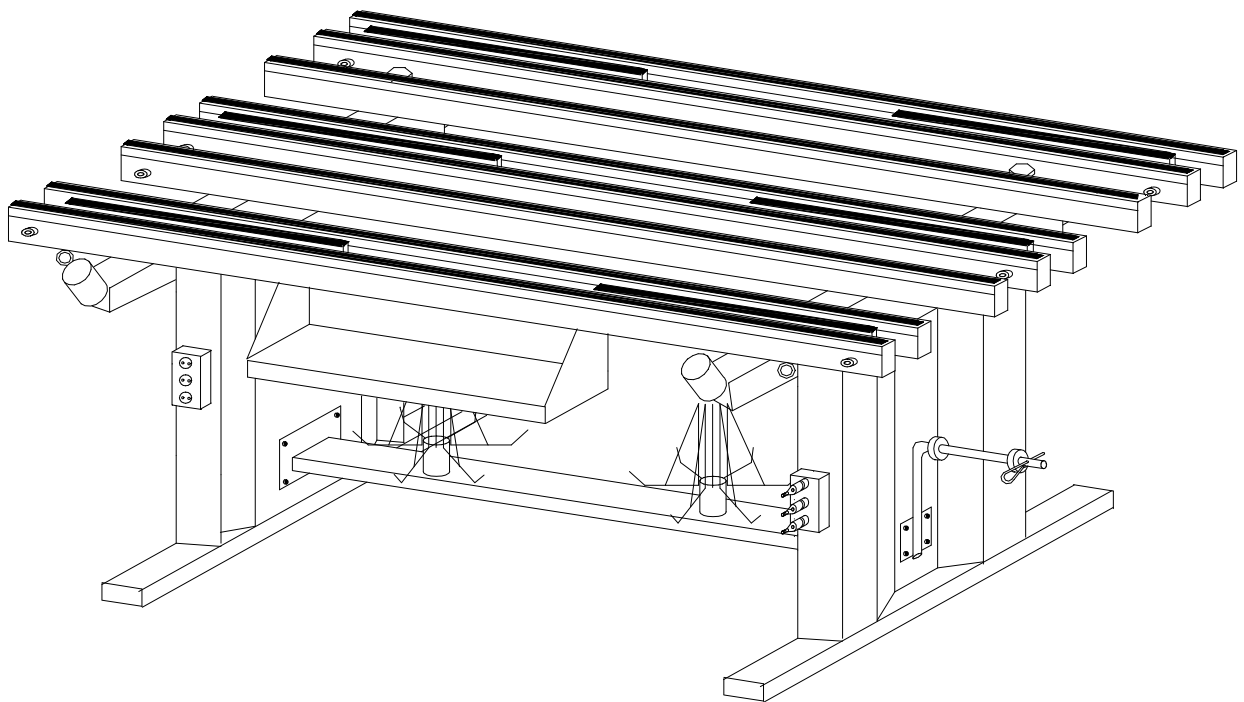




# WORK AND ASSEMBLY BENCH

## B – 4000L



MADE IN SPAIN  
JANUARY 2003 EDITION

# TABLE OF CONTENTS

---

## 1 INTRODUCTION

- 1.1 Legislation applicable to the planning and construction of the machine.

## 2 GENERAL MACHINE DATA

- 2.1 Machine identification data.
- 2.2 Technical data.

## 3 INDICATIONS REGARDING TRANSPORT AND STORAGE

## 4 INSTRUCTIONS FOR ANCHORING AND SERVICE START-UP

- 4.1 Anchoring instructions.
- 4.2 Power supply connection.
- 4.3 Instructions regarding blade installation.
- 4.4 Cutting coolant.
- 4.5 Pneumatic oil.

## 5 RECOMMENDATIONS AND MAINTENANCE

- 6.1 Type and frequency of inspections.
- 6.2 Qualified personnel for maintenance and repair work.
- 6.3 Manufacturer recommendations.

## 7 DRAWINGS AND SCHEMATICS

## 1 INTRODUCTION

---

This instruction manual has been made in compliance with the requirements of the Legislation according to the Machine directive 89/392/CEE and its subsequent amendments.

The instruction manual represents an integral part of the machine. It must be consulted before, during and after the machine is put into service, as well as whenever it is considered necessary, thereby respecting the content in each and every one of its parts.

This is the only way in which the fundamental objectives that have been established on the basis of this manual will be achieved, such as accident prevention and making optimal use of the machine features.

Within the framework of this manual, all aspects regarding safety and accident prevention on the job while using the machine have been considered in every detail, herein highlighting the information that is of greatest interest to the user.



### ATTENTION

---

**Before installing the machine, read this manual carefully. The manual must be kept throughout the life of the machine, so that it is easy to find if necessary. In the event that the used machine is sold, the machine shall be sold together with this manual. In the event that the machine is scrapped, the identification plate and any other document supplied with the same must be destroyed.**

---

### 1.1 Legislation applicable to the planning and construction of the machine.

EN-292-1	Machine Safety. Basic concepts, general design principles.
EN-292-2	Machine Safety. Basic concepts, general design principles.
EN-294	Safety distances to prevent dangerous zones from being reached by the upper extremities.
EN-60204/1	Electrical equipment of industrial machines.
EN-418	Machine safety; emergency stop equipment.
98/37/CEE	on "Machine Safety."
93/68/CEE	on the CE Marking (amendment)
73/23/CEE	on "Safety of Electrical Material."

## 2 GENERAL INFORMATION

---

### tronzadoras “MG” S.A.

Pol. Ind. FONT DE LA PARERA, s/n  
08430 LA ROCA DEL VALLES  
BARCELONA (SPAIN)  
Tel.: 34 93 842 41 60  
Fax: 34 93 842 41 28

### 2.1 Machine identification data.

Model: ----- **WORK AND ASSEMBLY BENCH B-4000L**  
Serial number: -----  
Manufacturing year: -----



### NOTE

---

In order to request spare parts, whether covered by the warranty or not, always indicate the model and serial number of the machine, as well as the name of the part and the code that appear in the last chapter of the parts exploded views.

---

### 2.2 Technical data

- A bench especially designed for assembly aluminium and PVC frames.
- Working surface protected by rubber profiles.
- Dimensions :            Compacted    2300 x 1000  
                                  Extended     4000 x 1800
- Weight :                162 Kg
- 5 arms for small assemblies.
- 2 rubber winders
- Four supports for fitting electric and pneumatic tools.
- 6 electrical sockets
- 5 pneumatic sockets
- Blowing pistol
- 2 side trays.

### 3 INDICATIONS REGARDING TRANSPORT AND STORAGE

---

The machine is delivered on a pallet in order to be transported by forklift.

Store in the vertical position.

Do not stack.

If the machine remains stored for a long period of time, periodically lubricate. Do not expose to the elements.

The packaging is made of properly designed and sized wood, and it is also supplied wrapped in plastic.



#### CAUTION

---

**Do not improperly dispose of the packaging. Send this material to be recycled or disposed of in accordance with all legislation in force.**

---

### 4 INSTRUCTIONS FOR ANCHORING AND SERVICE START-UP

---

#### 4.1 Instructions for assembly

Ensure that the machine has not suffered any damage during transport by making an initial visual inspection. If damage is observed, advise the manufacturer immediately.

1. Fit the legs as shown in figure 7.3, page 8 of the manual.
2. Fit the tray on the legs and fix with the bolts supplied in the spares bag.
3. Once assembled, level with the conic feet of the legs and make sure the bench is stable and does not rock excessively.

### 6 RECOMMENDATIONS AND MAINTENANCE

---

#### 6.1 Type and frequency of inspections.

The operator's knowledge of the machine is one of the best ways of daily control of any possible problem. If any failure is detected, work must be stopped and qualified personnel must be informed immediately.



#### NOTE

---

**Always clean the machine and the work area at the end of the workday.**

---

## 6.2 Qualified personnel for maintenance and repair work.

- All repairs shall be made exclusively by qualified personnel, thereby always using original replacement parts. If not, the machine may be damaged or the user may be injured.
- The maintenance and cleaning of the machine must not be neglected. The life of the machine and its optimal operation depend on it considerably.

## 6.3 Manufacturer recommendations.

- ⇒ In the event that the machine is broken down or the saw blades must be replaced, place a padlock on the protection switch and place the keys under the care of qualified personnel.
- ⇒ Before working on any electrical devices, disconnect the plug from the power supply.
- ⇒ If extension cords are used, ensure that the cable has the appropriate cross-section for the power of the machine.
- ⇒ Whenever any part has to be replaced, use an original replacement part and endeavour to use the oil recommended by the manufacturer.



### ATTENTION

The manufacturer hereby guarantees the supply of each one of the parts or components for at least 3 years as from the manufacturing date of the machine.



### ATTENTION

The manufacturer is not responsible for breakdowns caused due to the improper use of the machine.

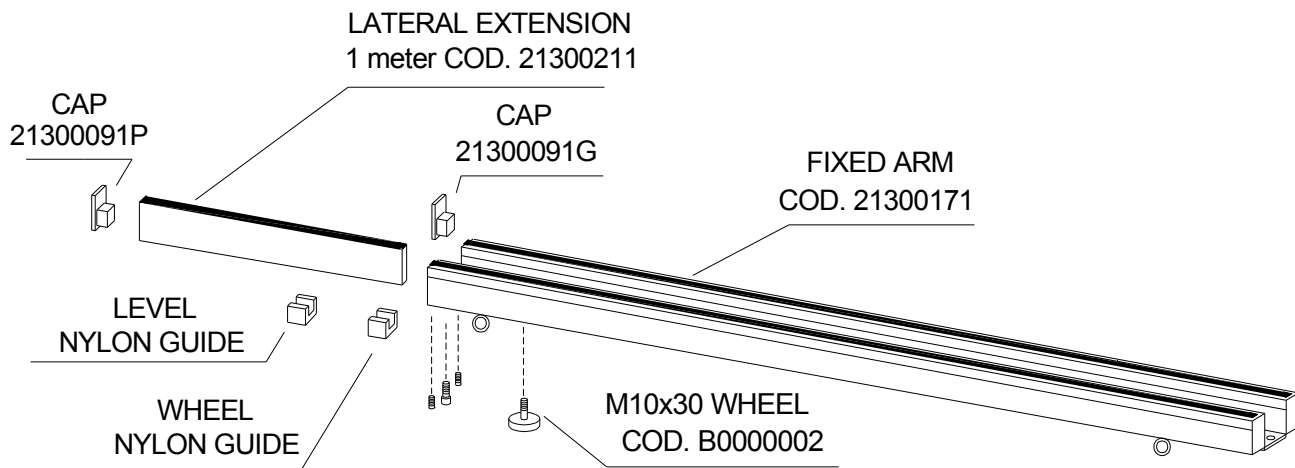


### NOTE

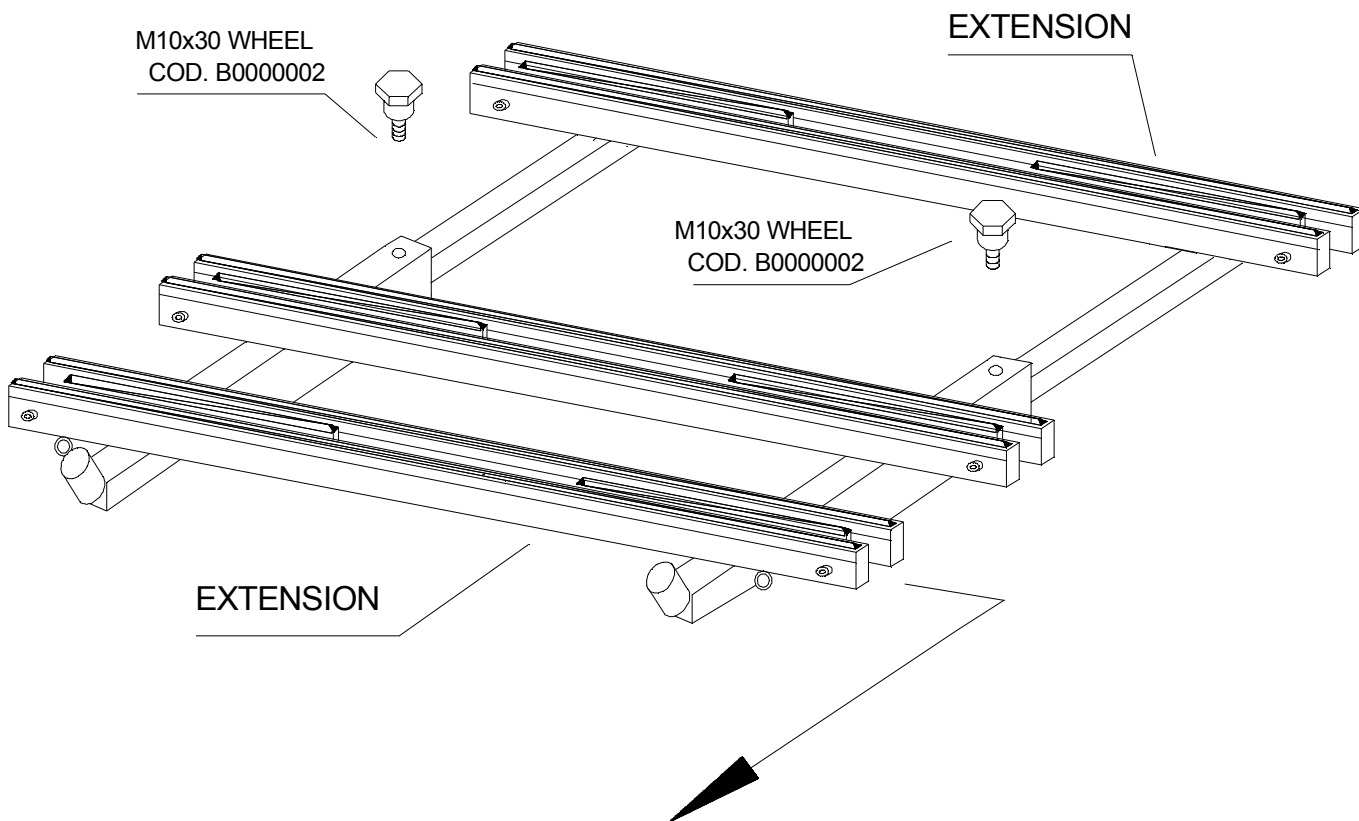
In case of any doubt or problem, do not hesitate to consult the manufacturer.

DIAGRAMS

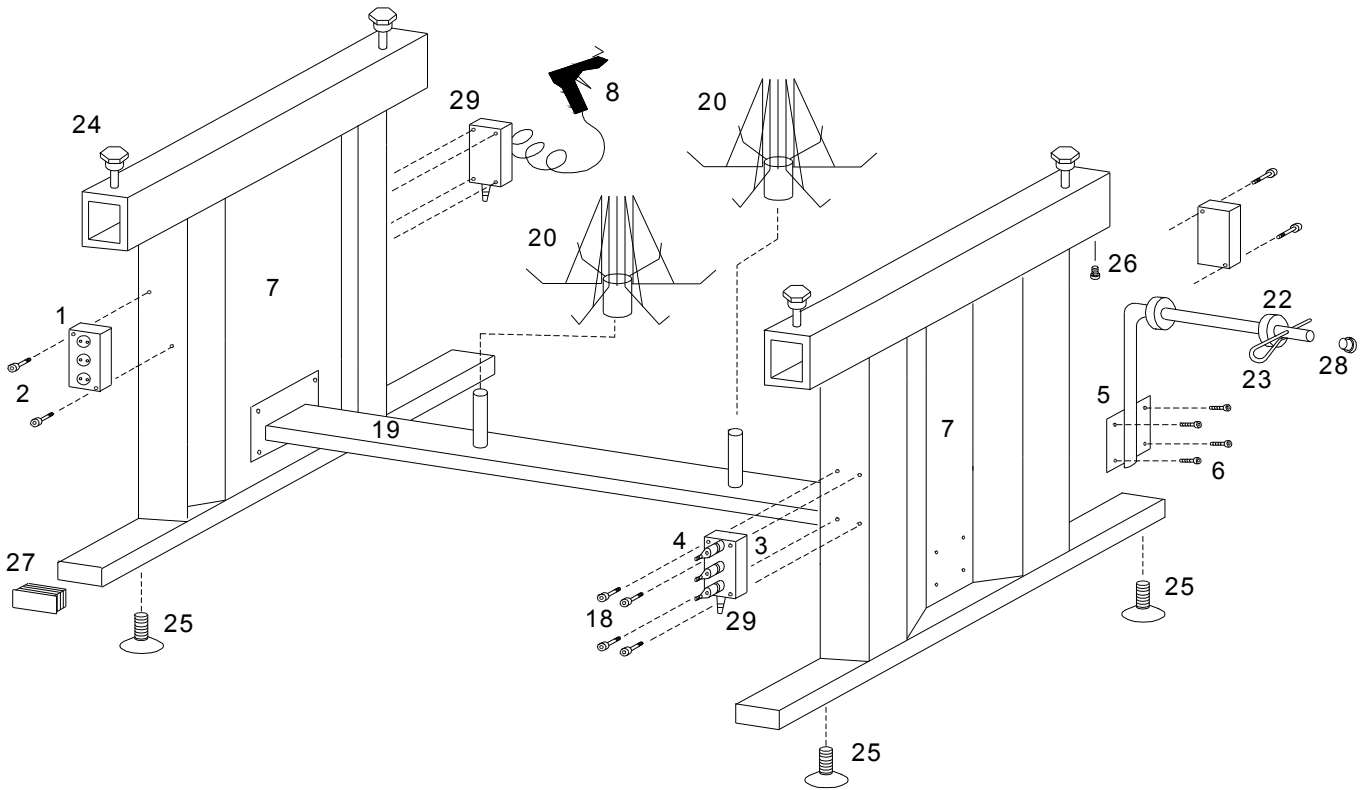
Arm extension system



Width extension system



Leg breakdown



No.	NAME	CODE	No.	NAME	CODE
1	ELECTRIC SOCKET	21300031	10	WINDING SPIDER	21300021
2	BOLT DIN 912 M5x20		11	WHEEL M10x30	B0000002
3	PNEUMATIC SOCKET	21300041	12	CONIC FOOT M10	B0000001
4	FAST FEMALE PLUG	21300141	13	PIPE STOPPER 80x40	21300081
4M	FAST MALE CONNECTOR	21300151	14	PIPE STOPPER Ø20	21300101
5	RUBBER ARM	21300191	15	BODYWORK WASHER	21300021
6	BOLT DIN 912 M10x20		16	PIN R	21300051
7	SHEET LEG		17	BOLT DIN 912 M10x30	
8	PISTOL WITH BAND		18	BOLT DIN 912 M5x30	
9	LEG CROSS MEMBER		19	PIN 1/4" Ø8	21300161